

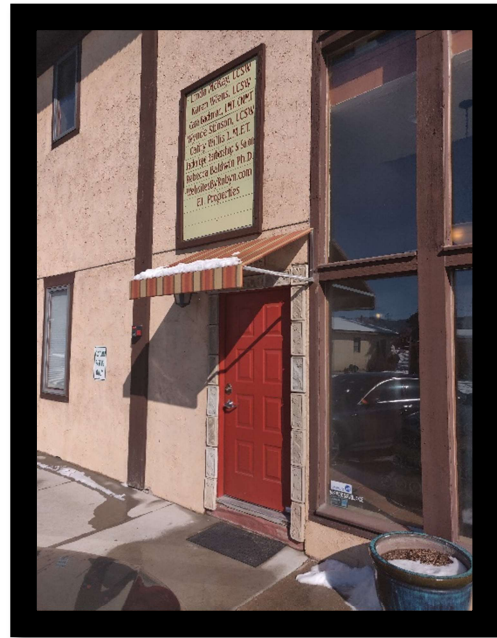


LIONHEART

Psychotherapy, PLLC

My office is located at 220 N. Washington Street, in the Chapala Building at the corner of 2nd and Washington Streets in historic downtown Monument.

When you arrive, please park along the West side of the building or in the parking lot on the North side of the building. Please enter the building through the red door on the West side with the striped awning. (pictured right)



As you enter, you will see the waiting area straight ahead. (pictured left)

I will come and get you from the waiting area at our appointment time.

If you have any difficulty finding the office or if you have a late appointment and another tenant has already locked the exterior doors to the building, please call my cellphone at (719) 304-6146.

I look forward to seeing you at my office!